

**Weighs
less than
1 lb!**



CS-Pro MED



Portable



Powerful



Precise



Painless



Profitable

The worlds first
ultra portable acoustic
shock wave device.

Schedule a demo today!

Learn More:
curative-sound.com
info@curative-sound.com

FDA Cleared.

Curative Sound | CS-Pro MED



Powerful

Shock wave characteristics meet or exceed existing full sized units.

Versatile

Five interchangeable standoffs treat tissue from 0 mm to 60 mm deep.

Lightweight

Device weighs only 14.5 oz.
No cords or cables to get in the way.

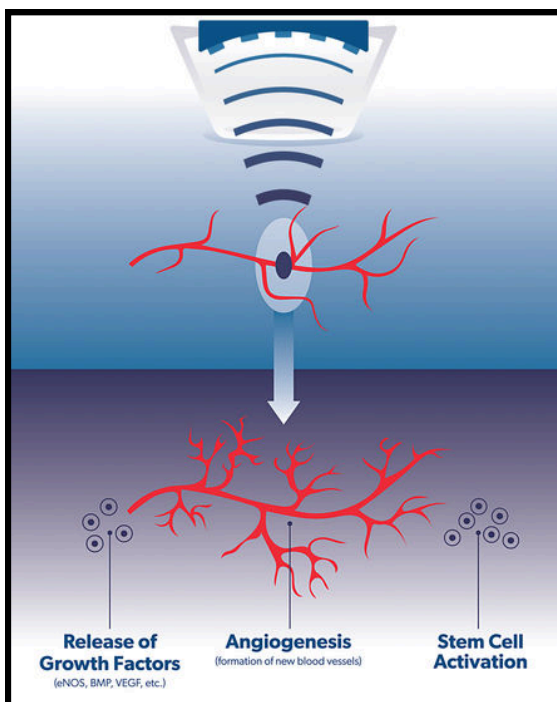
Quiet

Less noise than the click of a pen.
Designed for minimal patient stress.

Long Lasting

Deliver up to 100,000 shock waves on a single battery charge.

What is Focused Extracorporeal Shock Wave Therapy?



f-ESWT is an evidenced based therapy that focuses high pressure acoustic shock waves into tissue. In response, the body releases growth factors that trigger a cascade of healing responses in musculoskeletal tissue.

